

# Algorithm

Step, step

Answer



Folled List Page 1  
 k-8 Mathematics  
 (Heide man  
 12/11/09)

Function Rule

(Domain set  $x$ ,  
 Range set  $y$ )

$$f(x) = ax^2 + bx + c$$

$$f(x) = x + 1$$

$(\dots, x_0, y_1, x_2, y_2, \dots)$

~~$(x, y_a)$~~

Continuous Funct.



Angle

Ray  
 Vertex side



Right



Acute



Obtuse



Area unit sq. 1



Planar



Circle  
Planar

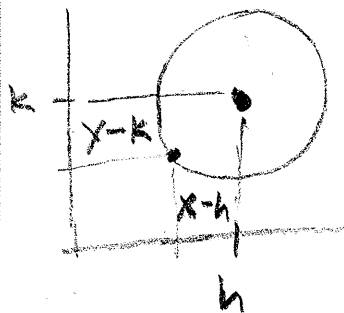
Radius



Diameter



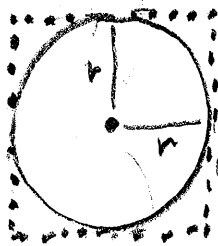
$$(y-k)^2 + (x-h)^2 = r^2$$



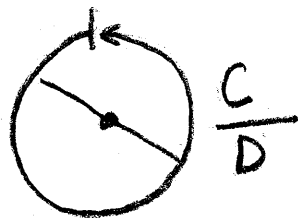
Area

$$O = 3.14 r^2$$

$$□ = 4 r^2$$



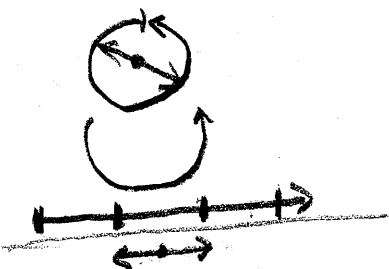
Pi · π



Alternate:

D, π

$$\frac{C}{D}$$



with repetition... →

Pi π

$$\frac{C}{D}$$

